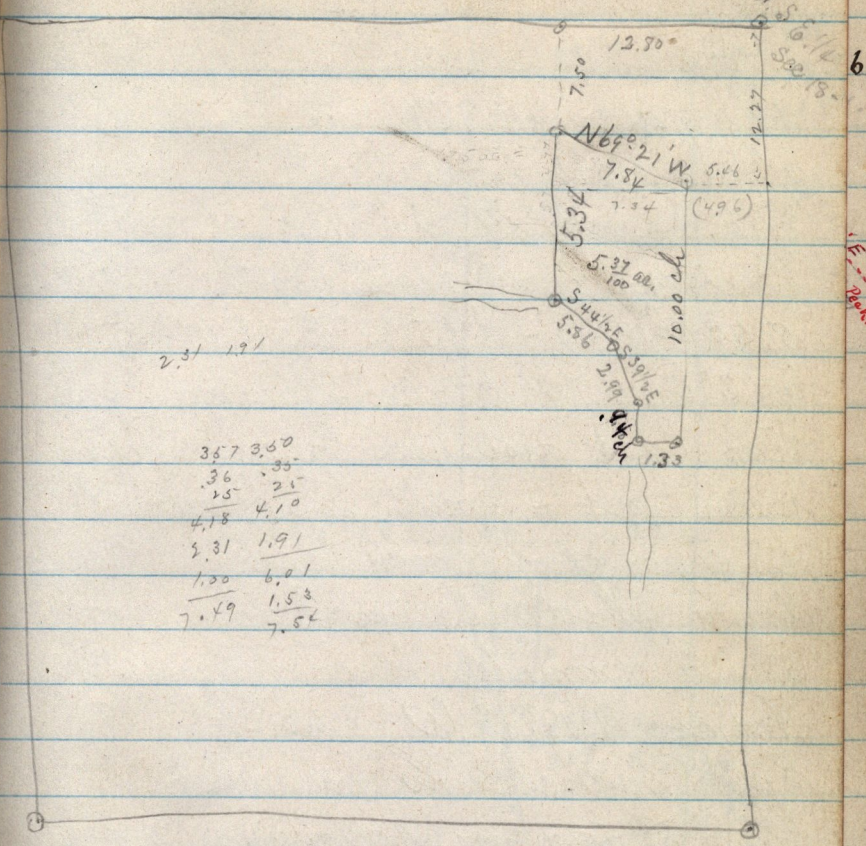


S. E. 1/4 Sec 18 T 67 R 1 W

4.36 6.77
27 47
14 21
4.77 7.34

N.E. cor. S. E. 1/4 Sec 18



2.31 1.91

367	3.60
.36	.30
15	.25
4.18	4.10
2.31	1.91
1.30	6.01
7.49	1.53
	7.54

Prog. 12.80 ch West ^{3rd} and 7.50 ch S. from N.E. cor of ^{cor}
of the above 1/4 Sec. Thence S 5.34 ch; to center of Mill
creek. Thence S 44 1/2° E. 5.86 ch in channel of said ^{creek}
creek - Thence S 39 1/2° E. 3.00 ch also in the channel
of said creek. Thence due south ⁹⁴/₁₀₀ of one chain in
said creek. Thence due East 1.33 chains; Thence
North 10.00 ch to water sect - Thence N 69° 21' W
7.84 chains in said water sect to bear S 37 3/4°